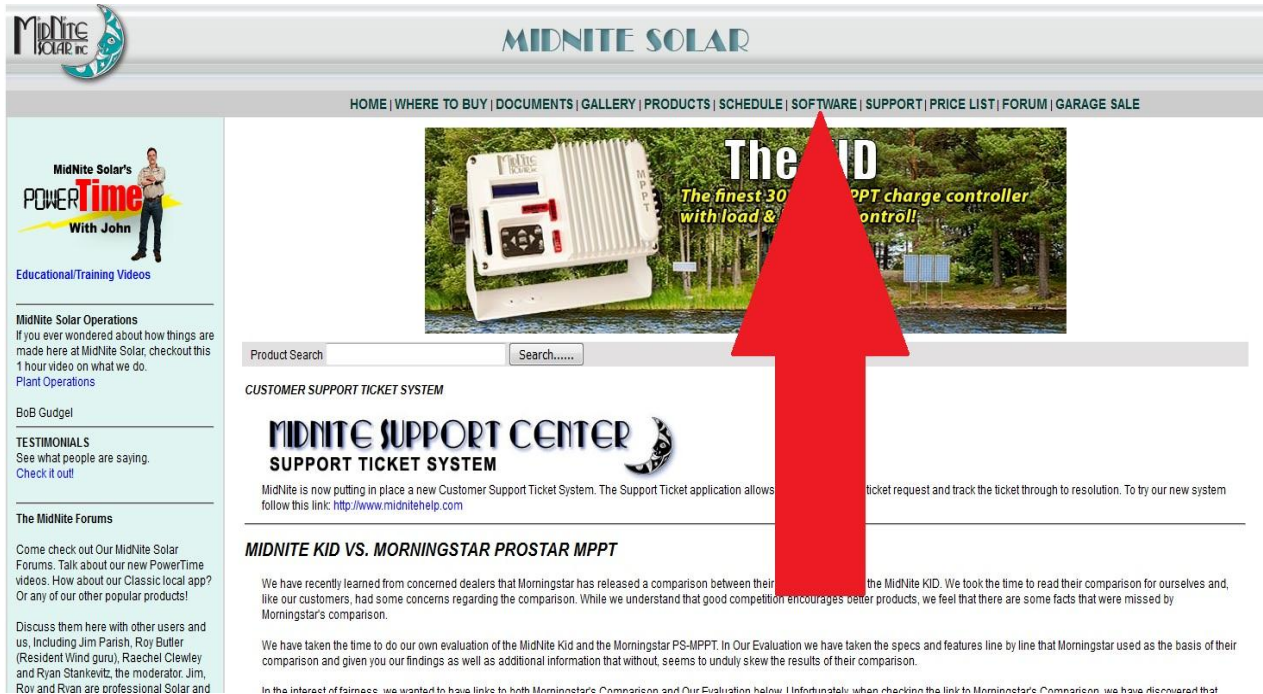


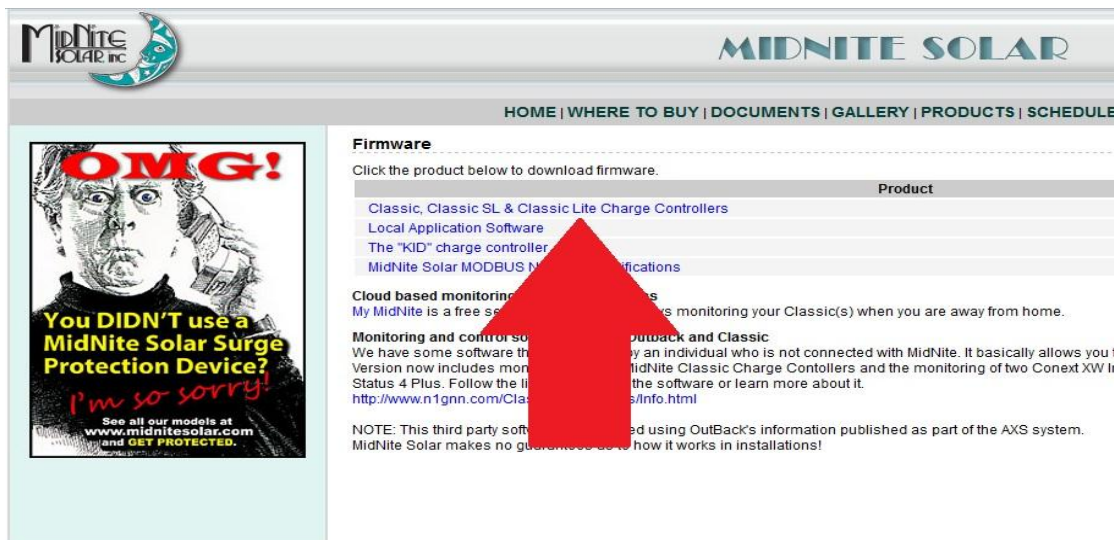
Firmware install with Windows 10

Step 1. Go to our website www.midnitesolar.com and Left Click on Software.



The screenshot shows the MidNite Solar website homepage. The navigation bar at the top includes links for HOME, WHERE TO BUY, DOCUMENTS, GALLERY, PRODUCTS, SCHEDULE, SOFTWARE, SUPPORT, PRICE LIST, FORUM, and GARAGE SALE. A red arrow points to the 'SOFTWARE' link. Below the navigation bar, there is a search bar and a section for 'CUSTOMER SUPPORT TICKET SYSTEM' with the heading 'MIDNITE SUPPORT CENTER SUPPORT TICKET SYSTEM'. There is also a section titled 'MIDNITE KID VS. MORNINGSTAR PROSTAR MPPT'.

Step 2. Left Click on “Classic, Classic SL & Classic Lite charge controlerls”



The screenshot shows the 'Firmware' page on the MidNite Solar website. The page has a header with the MidNite Solar logo and navigation links. A red arrow points to the 'Classic, Classic SL & Classic Lite Charge Controllers' link in the product list. Below the product list, there is a section for 'Cloud based monitoring' and 'Monitoring and control software for OutBack and Classic'.

Firmware

Click the product below to download firmware.

| Product |
|---------------------------------------------------------------------------|
| Classic, Classic SL & Classic Lite Charge Controllers |
| Local Application Software |
| The "KID" charge controller |
| MidNite Solar MODBUS N |

Cloud based monitoring

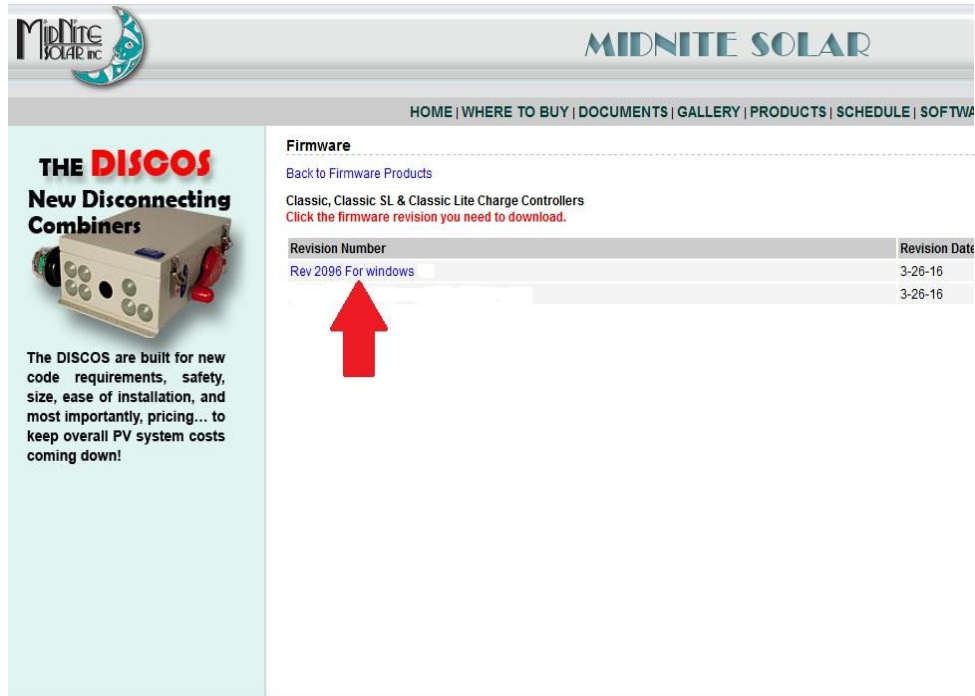
My MidNite is a free software application that allows you to monitor your Classic(s) when you are away from home.

Monitoring and control software for OutBack and Classic

We have some software that allows you to monitor your OutBack and Classic charge controllers. This software is designed for use by an individual who is not connected with MidNite. It basically allows you to monitor the status of your OutBack and Classic charge controllers and the monitoring of two Conext XW Ir Status 4 Plus. Follow the link to download the software or learn more about it.
<http://www.n1gmn.com/Classics/Info.html>

NOTE: This third party software was developed using OutBack's information published as part of the AXS system. MidNite Solar makes no guarantee as to how it works in installations!

Step 3. Left click on the release you are looking for (Higher # is newer)




MidNite SOLAR inc MIDNITE SOLAR

HOME | WHERE TO BUY | DOCUMENTS | GALLERY | PRODUCTS | SCHEDULE | SOFTWARE

THE DISCOS

New Disconnecting Combiners



The DISCOS are built for new code requirements, safety, size, ease of installation, and most importantly, pricing... to keep overall PV system costs coming down!

Firmware

[Back to Firmware Products](#)

Classic, Classic SL & Classic Lite Charge Controllers
Click the firmware revision you need to download.

| Revision Number | Revision Date |
|--------------------------------------|---------------|
| Rev 2096 For windows | 3-26-16 |
| | 3-26-16 |

Step 4. Left Click the download link



MidNite SOLAR inc MIDNITE SOLAR

HOME | WHERE TO BUY | DOCUMENTS | GALLERY | PRODUCTS | SCHEDULE | SOFTWARE | SUPPORT | PRICE LIST | FORUM | GARAGE SALE

Firmware Revision

[Firmware Products](#) | [Firmware List](#)

Classic, Classic SL & Classic Lite Charge Controllers

Firmware Revision Number: [Rev 2096 For windows](#)
Firmware Revision Date: 3-26-16

[Download Product Firmware Rev 2096 For windows](#)

Revision Includes:
This updater Fixes the 10 day lock up on the Ethernet

Release Notes:
A Factory Restore is **NOT** an update (Please note you must update the Classic and MNGP first). This will erase all the custom settings so make sure you have them noted before hand. The New AUX functions can possibly change settings in the existing AUX modes so if a factory restore is not done please verify all Aux settings.

After installing the firmware on the Classic AND MNGP it would be a good idea to do a "Factory Restore" or a "Quick Start". To do this first turn the battery and solar power to the Classic off. Next, turn the battery power back on while holding the L and R arrows. Hold the arrows until the first "Solar, Wind or Hydro" screen pops up. Follow the on screen prompts and continue setup. Note: This will reset all settings to factory defaults. You will need to re-enter custom settings such as Aux 1 and 2. You may want to write these settings down for reference prior to resetting the Classic.

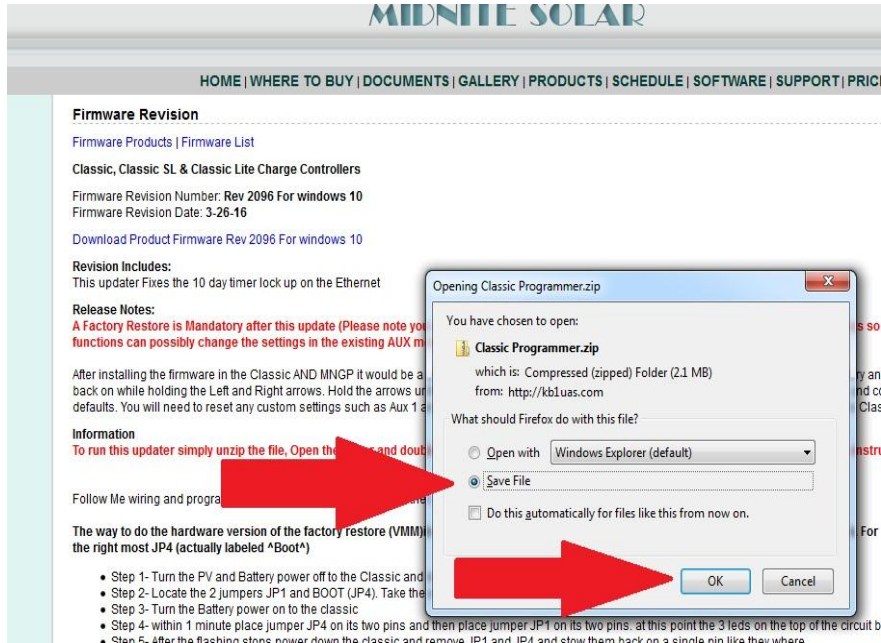
Information
To run this updater simply unzip the file, Open the folder and double click on the "Classic Charge Controller Program" then follow the on screen instructions

Follow Me wiring and programming instructions can be found in the Classic Users manual.

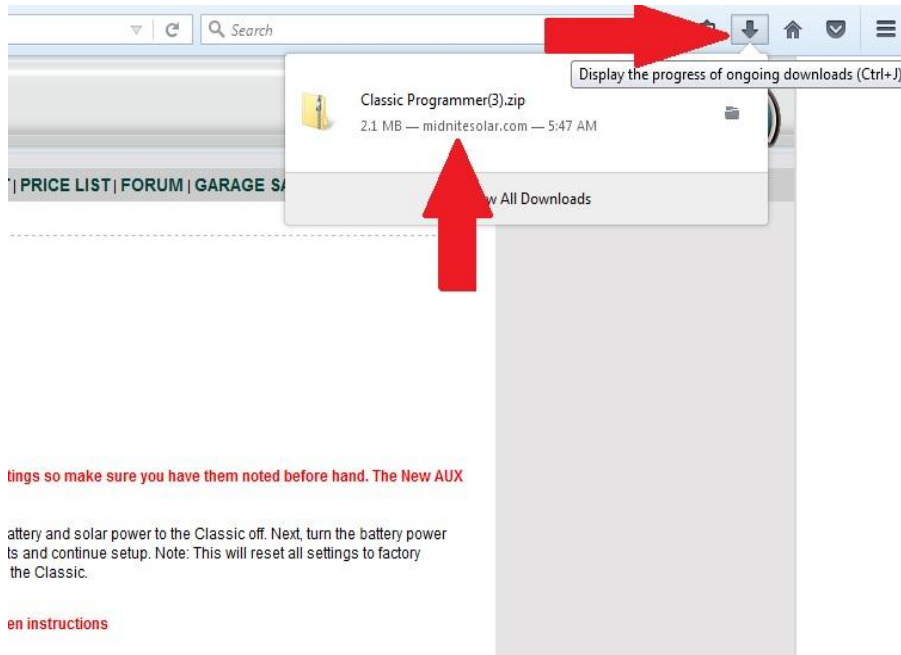
The way to do the hardware version of the factory restore (VMM) is as follows. There are 4 sets of jumpers directly above the blue terminal block. For the purpose of this we will call the left most jumper JP1 and the right most JP4 (actually labeled "Boot")

- Step 1- Turn the PV and Battery power off to the Classic and remove the front cover
- Step 2- Locate the 2 jumpers JP1 and BOOT (JP4). Take the actual jumpers and keep them in your hand
- Step 3- Turn the Battery power on to the classic
- Step 4- within 1 minute place jumper JP4 on its two pins and then place jumper JP1 on its two pins. at this point the 3 leds on the top of the circuit board should flash back and forth for about 60 seconds.
- Step 5- After the flashing stops power down the classic and remove JP1 and JP4 and stow them back on a single pin like they where.
- Step 6- Put the front cover on and power up the Classic Lite. If you have the MNL set to Custom you will need to go to the local app and reset the battery voltage and setpoints etc.

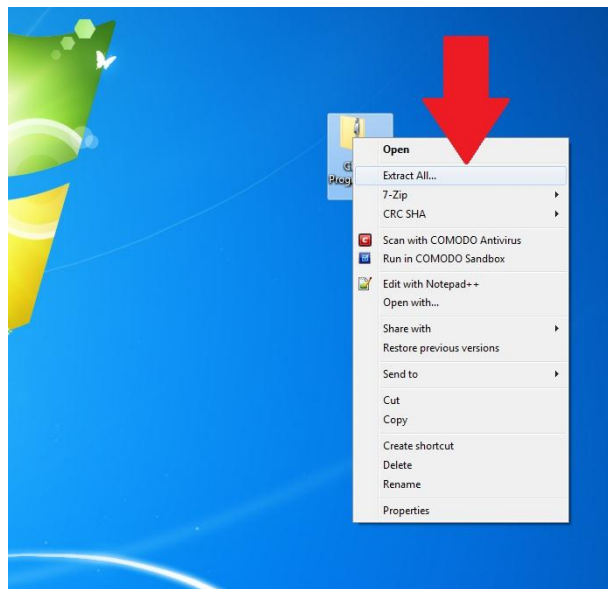
Step 5. Make sure "Save File" is selected and then click OK.



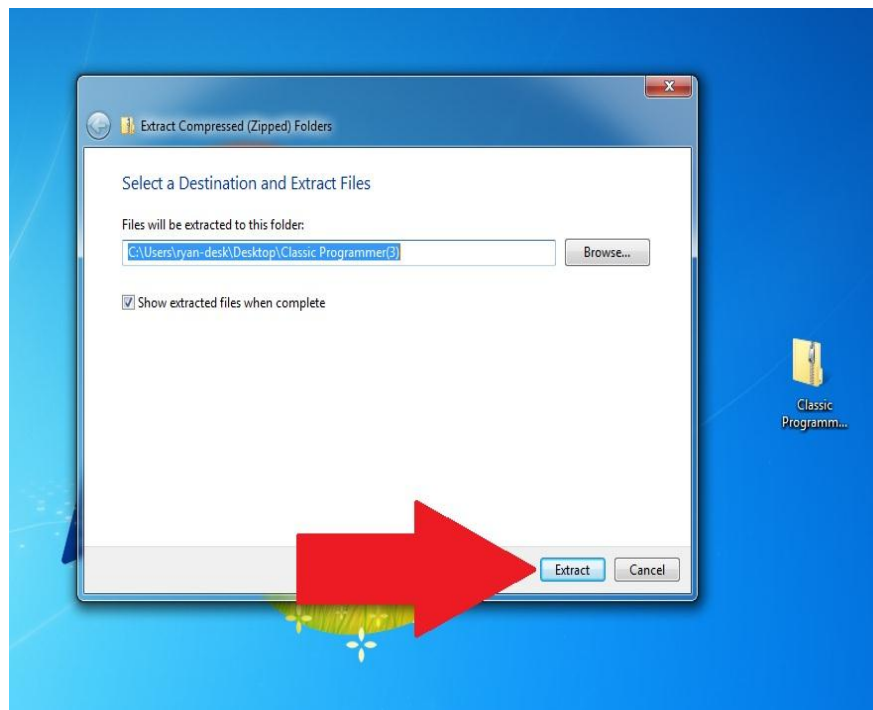
Step 6. Your browser may ask you where to save the file too, if it does save it to the desktop. Mozilla for example will save it to itself and will be accessible by clicking the download arrow then you can left click and drag the file to the desktop.



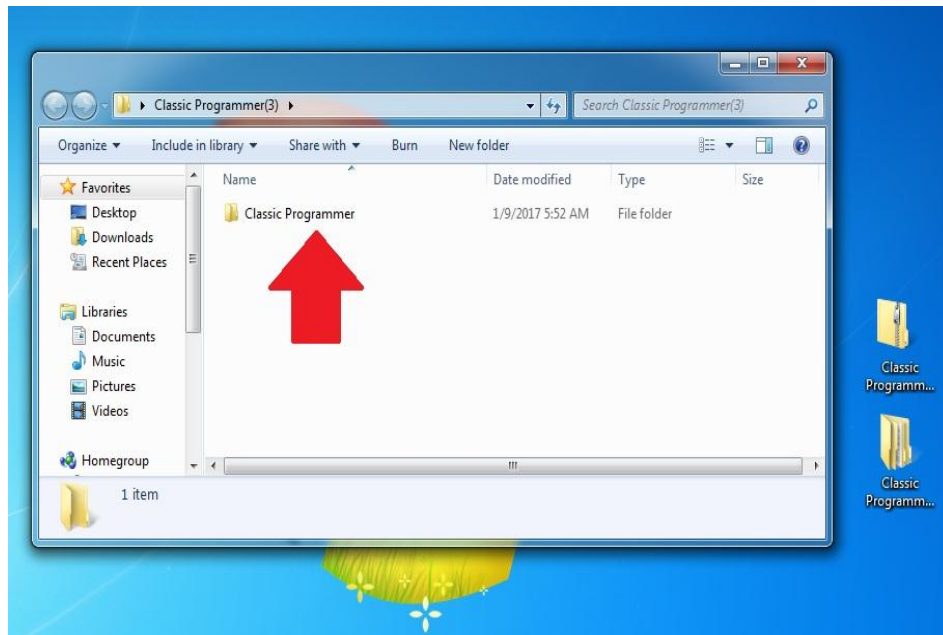
Step 7. Right click on the zipped file and left click on "Extract All"



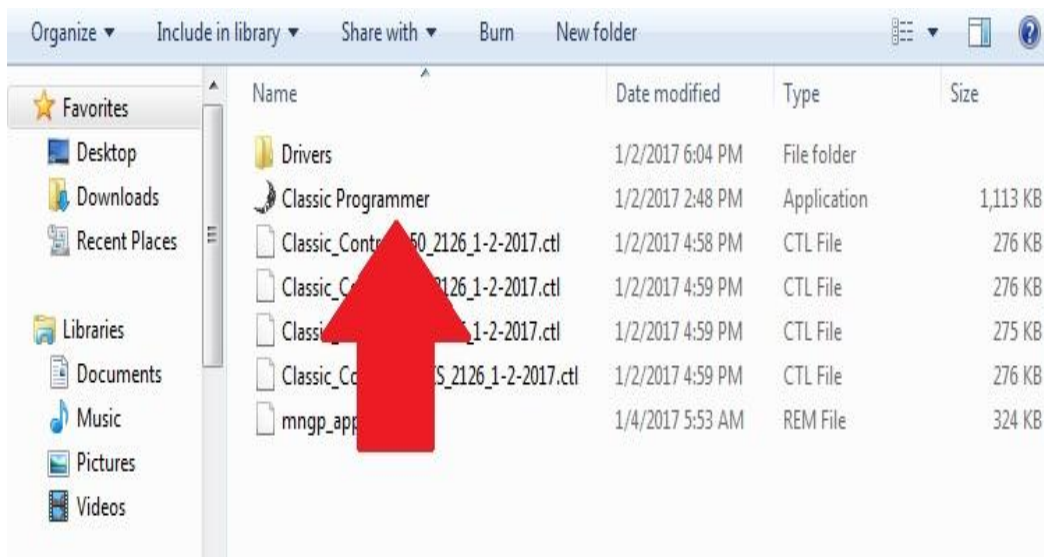
Step 8. The path in the destination box should be fine by default it will save it to the desktop where the zipped file is. Left click "Extract"



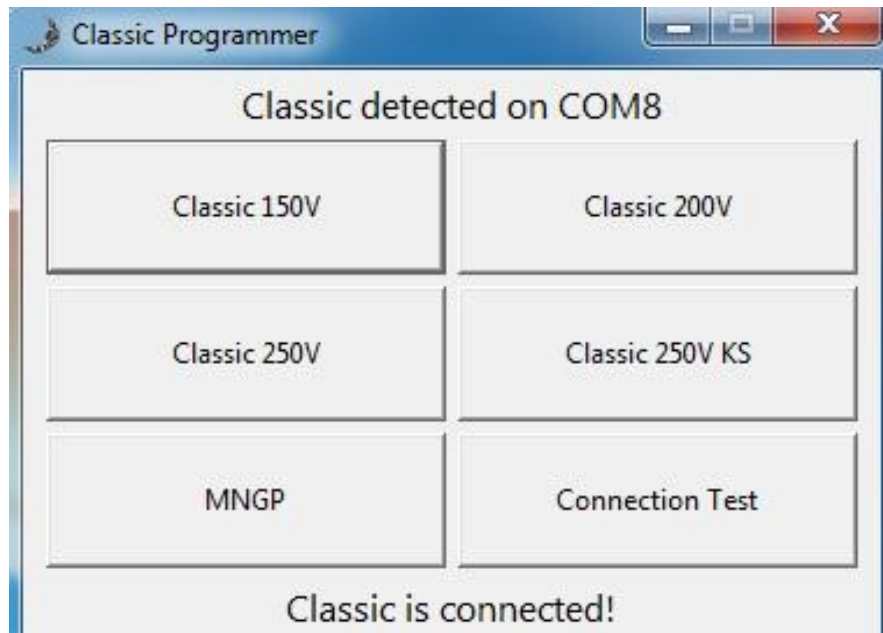
Step 9. Double Left Click on “Classic programmer” when this window comes up



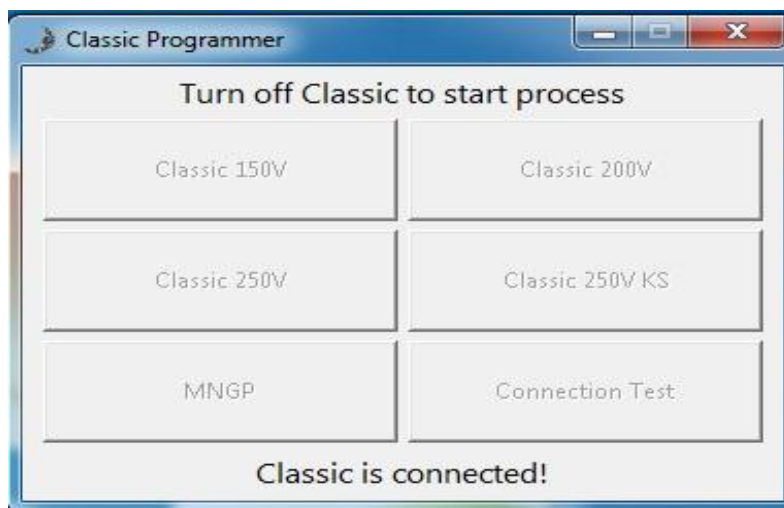
Step 10. Double click on the “Classic Programmer” application



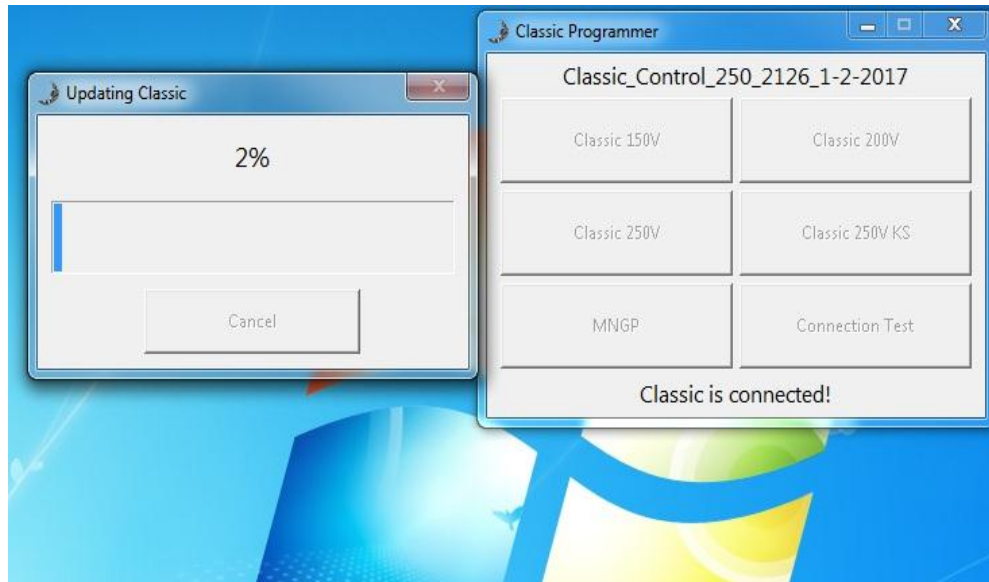
Step 11. With the Classic powered on and the USB cable plugged in you will need to select the Classic model you have. (150,200 etc)



Step 12. You will get a message to turn off the classic to start, so turn the classic off at this point



Step 13. Now it will Ask you to turn the power back on and when you do it will start the update process as shown. This should take about 10 minutes. Wait for it to say it was completed and click OK and then move on to step 14)



Step 14. At this point you need to update the MNGP (IF this is a Lite you are done) by clicking the box labeled MNGP and following similar steps as above for the Classic (This should take about 10 minutes)