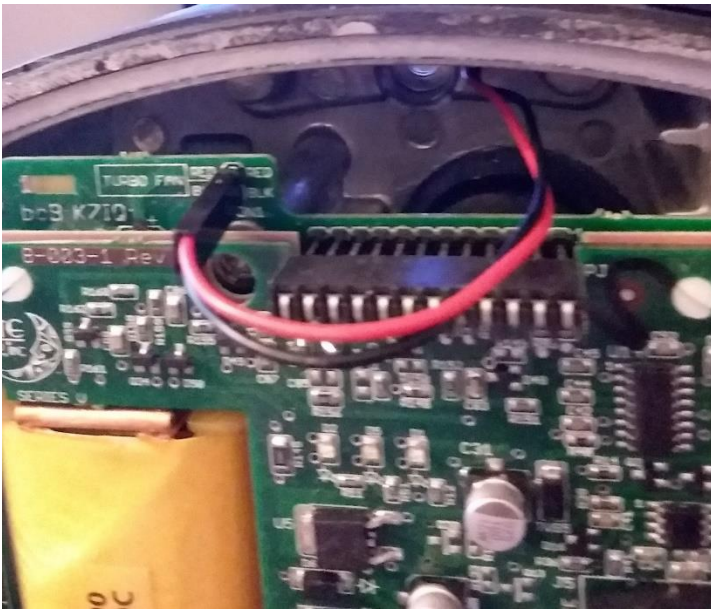


New Turbo Fan Assembly

Removal of old style turbo fan:

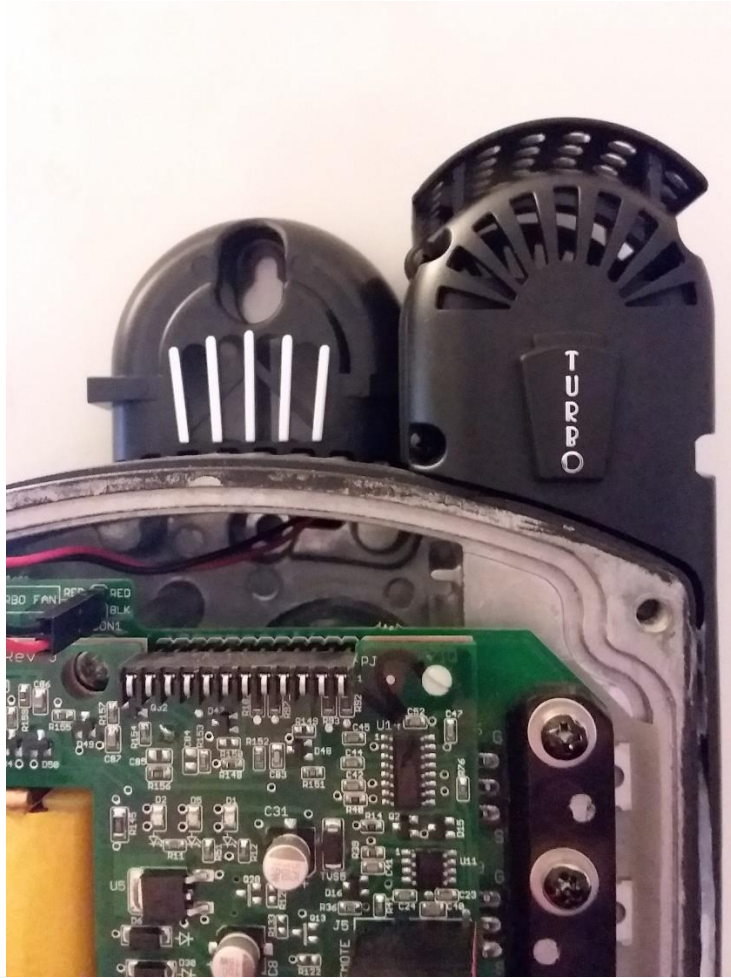
Remove the 2 screws on the back of the Classic that holds the Assembly on the Classic. Do not forget to remove the wires for the fan in the front.



Once the Assembly is off it can be discarded.

Place the Cover on top of the base and fan. Line up the 4 screws and tighten down snug. Make sure that the fan wires are not pinched or crushed, and that they are routed as in the picture. Pop the top vent into place.





Use the screws to mount the base back on the Classic:

